

A BETTER WAY TO DISPLAY®

CUSTOM EXHIBIT GROUP®



GLASS SHOWCASES / CLASSIC LINE

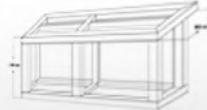


Satisfaction
guaranteed



on time
always

*Some restrictions apply



custom
designs



Live Chat
our team

CHAT NOW

CONTENT

Freestanding Showcases F-Series	04
Counter Showcases C-Series	11
Tower Showcases V-Series	17
Tower Showcases T-Series	23
Suspended Showcases SL-Series & SM-Series	26
Boutique Showcases B-Series	33
Wall-Mounted Showcases W-Series	36

CONTENT

Info Cabinets I-Series	40
Portable Showcases P-Series	45
Shapes and Combinations Materials	49
Material & Finishes	52
Light Solutions	55
Locks & Security	57
Shipping & Crating	59

FREESTANDING
SHOWCASES

FO-K

FROM \$1,480



- Freestanding showcase with glass top and kick base
- 39" x 16" x 71"
- Sliding or hinged glass doors
- Fully adjustable shelving
- Thru glass lock
- Leveller feet
- Various lighting options



F1

FROM \$1,630

- Freestanding showcase with lights in top
- 39" x 16" x 79"
- Sliding or hinged glass doors
- Fully adjustable shelving
- Thru glass lock
- Leveller feet
- Various lighting options

FO-S

FROM \$1,560

- Freestanding showcase with glass top and storage
- 39" x 16" x 71"
- Sliding or hinged glass doors
- Fully adjustable shelving
- Thru glass lock
- Leveller feet
- Various lighting options



Toll Free: (877) 923-3848

FOLLOW US

LIVE
CHAT

F1-S

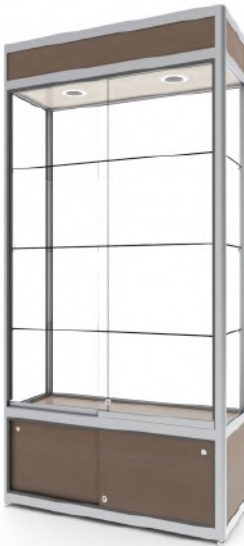
FROM \$1,630

- Freestanding showcase with lights in top and storage
- 39" x 16" x 79"
- Sliding or hinged glass doors
- Fully adjustable shelving
- Thru glass lock
- Leveller feet
- Various lighting options



F2

FROM \$1,690

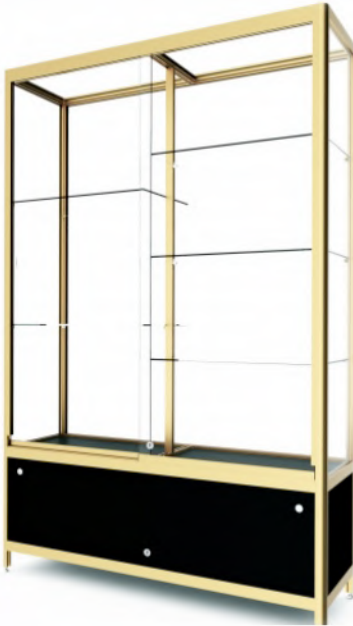


F2-P

FROM \$1,810

- Freestanding showcase with lights in top, backlit header top and pedestal base
- 39" x 16" x 91"
- Sliding or hinged glass doors
- Fully adjustable shelving
- Thru glass lock
- Leveller feet
- Various lighting options

- Freestanding showcase with lights in top and backlit header top
- 39" x 16" x 91"
- Sliding or hinged glass doors
- Fully adjustable shelving
- Thru glass lock
- Leveller feet
- Various lighting options

F3-SFROM **\$1,850**

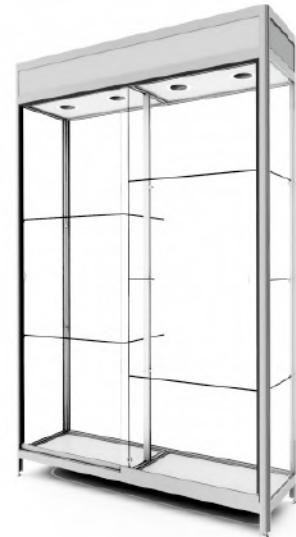
- Freestanding showcase with glass top, split shelving and storage
- 51" x 16" x 71"
- Sliding glass doors
- Fully adjustable shelving
- Thru glass lock
- Leveller feet
- Various lighting options

**F3**FROM **\$1,730**

- Freestanding showcase with glass top and split shelving
- 51" x 16" x 71"
- Sliding glass doors
- Fully adjustable shelving
- Thru glass lock
- Leveller feet
- Various lighting options

F4FROM **\$2,040**

- Freestanding showcase with lights in top and split shelving
- 51" x 16" x 79"
- Sliding glass doors
- Fully adjustable shelving
- Thru glass lock
- Leveller feet
- Various lighting options

Toll Free: **(877) 923-3848****FOLLOW US****LIVE
CHAT**

F6-K**FROM \$1,990**

- Freestanding centre split showcase with lights in top and kick base
- 51" x 24" x 71"
- Sliding or hinged glass doors
- Fully adjustable shelving
- Thru glass lock
- Leveller feet
- Various lighting option

**F7-S****FROM \$2,110****F5-K****FROM \$2,320**

- Freestanding showcase with lights in top with backlit header top, split shelves and kick base
- 51" x 16" x 91"
- Sliding glass doors
- Fully adjustable shelving
- Thru glass lock
- Leveller feet
- Various lighting options

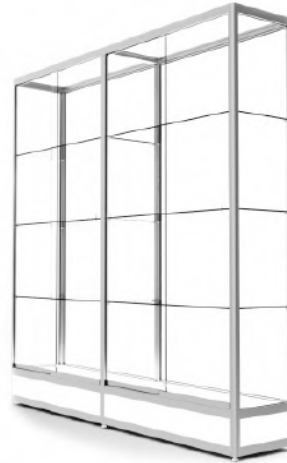
- Freestanding centre split showcase with lights in top and storage
- 39" x 24" x 79"
- Sliding or hinged glass doors
- Fully adjustable shelving
- Thru glass lock
- Leveller feet
- Various lighting options

F8-P

FROM \$2,320



- Freestanding centre split showcase with lights in top and backlit header and pedestal base
- 39" x 24" x 91"
- Sliding or hinged glass doors
- Fully adjustable shelving
- Thru glass lock
- Leveller feet
- Various lighting options



F9-K

FROM \$2,410

- Freestanding doublewide showcase with glass top, split shelving and kick base
- 73" x 16" x 71"
- Sliding or hinged glass doors
- Fully adjustable shelving
- Thru glass lock
- Leveller feet
- Various lighting options

F10-P

FROM \$2,590

- Freestanding doublewide showcase with lights in top, split shelving and pedestal base
- 73" x 16" x 79"
- Sliding or hinged glass doors
- Fully adjustable shelving
- Thru glass lock
- Leveller feet
- Various lighting option



Toll Free: (877) 923-3848

FOLLOW US


**LIVE
CHAT**




F11-S

FROM \$2,840

- Freestanding doublewide show-case, lights in top, split shelving, storage and backlit header
- 73" x 16" x 91"
- Sliding or hinged glass doors • Fully adjustable shelving
- Thru glass lock
- Leveller feet
- Various lighting options

F11-K

FROM \$2,720

- Freestanding doublewide show-case, lights in top, split shelving, backlit header and kick base
- 73" x 16" x 91"
- Sliding or hinged glass doors
- Fully adjustable shelving
- Thru glass lock
- Leveller feet
- Various lighting options



COUNTER
SHOWCASES

C1DP

FROM \$1,440



- 1/3 vision counter showcase with drawers and pedestal base
- 47" x 24" x 42"
- Sliding glass doors
- Drawers
- Thru glass lock
- Leveller feet
- Various lighting options

C1-6

FROM \$1,630



- 6-foot long 1/3 vision counter showcase with storage
- 71" x 24" x 42"
- Sliding glass doors
- Thru glass lock
- Leveller feet
- Various lighting options

C1-M

FROM \$1,250



- 1/3 vision counter showcase mushroom version with storage
- 47" x 24" x 42"
- Sliding glass doors
- Thru glass lock
- Leveller feet
- Various lighting options

C2-K**FROM \$1,400**

- 2/3 vision counter showcase with kick base
- 47" x 24" x 42"
- Sliding glass doors
- Fully adjustable shelving
- Thru glass lock
- Leveller feet
- Various lighting options

C2-CV**FROM \$1,500**

- 2/3 vision counter showcase corner version
- 53" x 23.6" x 42"
- Sliding glass doors
- Fully adjustable shelving
- Thru glass lock
- Leveller feet
- Various lighting options
- Custom Storage options

C2-MST**FROM \$1,410**

- 2/3 vision counter showcase mushroom version with shelf standards
- 47" x 24" x 42"
- Sliding glass doors
- Fully adjustable shelving
- Thru glass lock
- Leveller feet
- Various lighting options

Toll Free: (877) 923-3848**FOLLOW US****LIVE
CHAT**

C3-SPT**FROM \$1,520**

- Full vision counter showcase with shelf standards and pedestal base
- 47" x 24" x 42"
- Sliding glass doors
- Fully adjustable shelving
- Thru glass lock
- Leveller feet
- Various lighting options

C4**FROM \$1,370**

- 1/3 vision Diamond counter showcase
- 47" x 24" x 42"
- Sliding glass doors
- Fully adjustable shelving
- Thru glass lock
- Leveller feet
- Various lighting options

C4-6E**FROM \$1,560**

- 6-foot long 1/3 vision diamond counter showcase
- 71" x 24" x 42"
- Sliding glass doors
- Fully adjustable shelving
- Thru glass lock
- Leveller feet
- Various lighting options

C5-SQ**FROM \$950**

- 1/3 vision counter showcase with solid wood border
- 32" x 32" x 42"
- Sliding glass doors
- Thru glass lock
- Leveller feet
- Various lighting option
- Custom Storage options

C5**FROM \$1,570**

- 1/3 vision counter showcase with solid wood border
- 47" x 24" x 42"
- Sliding glass doors
- Fully adjustable shelving
- Thru glass lock
- Leveller feet
- Various lighting options

C5-CV**FROM \$1,560**

- 1/3 vision counter showcase corner version with solid wood border
- 53" x 24" x 42"
- Sliding glass doors
- Thru glass lock
- Leveller feet
- Various lighting options
- Custom Storage options

Toll Free: (877) 923-3848**FOLLOW US****LIVE
CHAT**

C6-8P

FROM \$2,320



- 8-foot long full vision counter showcase with split shelving on pedestal
- 95" x 24" x 42"
- Sliding glass doors
- Fully adjustable shelving
- Leveller feet
- Various lighting options

C7-8K

FROM \$2,130

- 8-foot long 1/3 vision counter showcase with split shelving and backlit kick base
- 95" x 24" x 42"
- Sliding glass doors
- Fully adjustable shelving
- Thru glass lock
- Leveller feet
- Various lighting options



TOWER
SHOWCASES
V-SERIES

VO

FROM \$890



- Vitrine showcase with glass top
- 18" x 18" x 72"
- Tempered hinged glass door
- Fully adjustable shelving
- Glass lock with handle
- Leveller feet

VO-P

FROM \$965



- Vitrine showcase with glass top and pedestal base
- 18" x 18" x 72"
- Tempered hinged glass door
- Fully adjustable shelving
- Glass lock with handle
- Leveller feet

VO-LS

FROM \$1,085



- Vitrine showcase with light in top and storage
- 18" x 18" x 72"
- Tempered hinged glass door
- Fully adjustable shelving
- Glass lock with handle
- Leveller feet
- Various lighting options

V1-P

FROM \$1,160



- Vitrine showcase with light in top and pedestal base
- 18" x 18" x 72"
- Tempered hinged glass door
- Fully adjustable shelving
- Glass lock with handle
- Leveller feet
- Various lighting options

V1-S

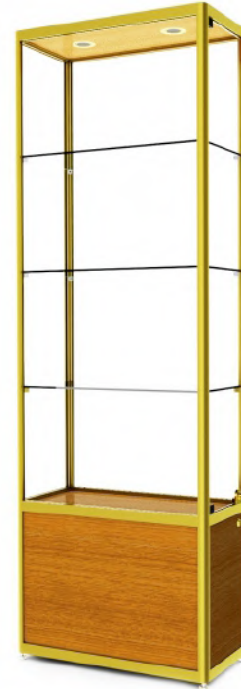
FROM \$1,280



- Vitrine showcase with light in top and storage
- 18" x 18" x 72"
- Tempered hinged glass door
- Fully adjustable shelving
- Glass lock with handle
- Leveller feet
- Various lighting options

V3-LS

FROM \$1,410



V2-P

FROM \$1,330



- Vitrine showcase with backlit header and pedestal base
- 18" x 18" x 79"
- Tempered hinged glass door
- Fully adjustable shelving
- Glass lock with handle
- Leveller feet
- Various lighting options

V3-P

FROM \$1,085



- Vitrine showcase with glass top and pedestal base
- 24" x 12" x 72"
- Tempered hinged glass door
- Fully adjustable shelving
- Glass lock with handle
- Leveller feet
- Various lighting options

- Vitrine showcase with lights in top and storage
- 24" x 12" x 72"
- Tempered hinged glass door
- Fully adjustable shelving
- Glass lock with handle
- Leveller feet
- Various lighting options

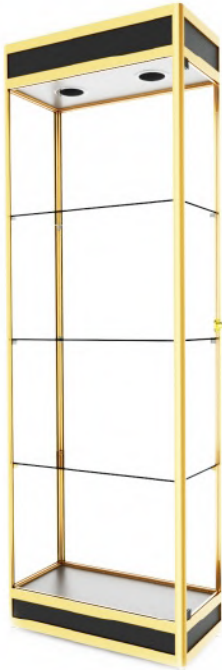
Toll Free: (877) 923-3848

FOLLOW US

LIVE
CHAT

V4-K

FROM \$1,280



- Vitrine showcase with lights in top and kick base
- 24" x 12" x 72"
- Tempered hinged glass door
- Fully adjustable shelving
- Glass lock with handle
- Leveller feet
- Various lighting options

V4-S

FROM \$1,400



- Vitrine showcase with lights in top and storage
- 24" x 12" x 72"
- Tempered hinged glass door
- Fully adjustable shelving
- Glass lock with handle
- Leveller feet
- Various lighting options

V5-K

FROM \$1,470



- Vitrine showcase with backlit header and kick base
- 24" x 12" x 79"
- Tempered hinged glass door
- Fully adjustable shelving
- Glass lock with handle
- Leveller feet
- Various lighting options

V6

FROM \$1,220



- Triangular vitrine showcase with glass top and bottom
- 18" x 18" x 72"
- Tempered hinged glass doors
- Fully adjustable shelving
- Glass locks with handle
- Leveller feet

V6-LK

FROM \$1,290



- Triangular vitrine showcase with lights in top and kick base
- 18" x 18" x 72"
- Tempered hinged glass doors
- Fully adjustable shelving
- Glass locks with handle
- Leveller feet
- Various lighting options

V7-K

FROM \$1,360



- Triangular vitrine showcase with lights in top and kick base
- 18" x 18" x 72"
- Tempered hinged glass doors
- Fully adjustable shelving
- Glass locks with handle
- Leveller feet
- Various lighting options

V7-S

FROM \$1,380



- Triangular vitrine showcase with lights in top and storage
- 18" x 18" x 72"
- Tempered hinged glass doors
- Fully adjustable shelving
- Glass locks with handle
- Leveller feet
- Various lighting options

V8-P

FROM \$1,415



- Triangular vitrine showcase with lights in top and pedestal base
- 18" x 18" x 79"
- Tempered hinged glass door
- Fully adjustable shelving
- Glass lock with handle
- Leveller feet
- Various lighting options

Toll Free: (877) 923-3848

FOLLOW US


**LIVE
CHAT**


V9-K

FROM \$1,220



- Vitrine showcase with 45 degree glass top and kick base
- 18" x 18" x 72"
- Tempered hinged glass door
- Fully adjustable shelving
- Glass lock with handle
- Leveller feet
- Various lighting options

V9-P

FROM \$1,260



- Vitrine showcase with 45 degree glass top and pedestal base
- 18" x 18" x 72"
- Tempered hinged glass door
- Fully adjustable shelving
- Glass lock with handle
- Leveller feet
- Various lighting options

TOWER
SHOWCASES

T-SERIES

TO

FROM \$1,070



- Tower showcase with glass top
- 24" x 24" x 71"
- Tempered hinged glass doors
- Fully adjustable shelving
- Glass lock with handle
- Leveller feet
- Various lighting options

TO-P

FROM \$1,140



- Tower showcase with glass top and pedestal base
- 24" x 24" x 71"
- Tempered hinged glass doors
- Fully adjustable shelving
- Glass lock with handle
- Leveller feet
- Various lighting options

T1-K

FROM \$1,270



- Tower showcase with lights in top and kick base
- 24" x 24" x 79"
- Tempered hinged glass doors
- Fully adjustable shelving
- Glass lock with handle
- Leveller feet
- Various lighting options

T1-P

FROM \$1,390



- Tower showcase with lights in top and pedestal base
- 24" x 24" x 79"
- Tempered hinged glass doors
- Fully adjustable shelving
- Glass lock with handle
- Leveler feet
- Various lighting options

T1-S

FROM \$1,370



- Tower showcase with lights in top and storage
- 24" x 24" x 79"
- Tempered hinged glass doors
- Fully adjustable shelving
- Glass lock with handle
- Leveller feet
- Various lighting options

T2-K

FROM \$1,520



- Tower showcase with lights in top, backlit header and kick base
- 24" x 24" x 91"
- Tempered hinged glass doors
- Fully adjustable shelving
- Glass lock with handle
- Leveller feet
- Various lighting options

Toll Free: (877) 923-3848

FOLLOW US


**LIVE
CHAT**


SUSPENDED
SHOWCASES

SL20

FROM \$855



- Suspended showcase with glass top and bottom
- 48" x 16" x 16"
- Sliding glass doors
- Fully adjustable shelving
- Thru glass lock
- Adjustable height of poles
- Mount showcases at any height on poles



SL21

FROM \$1,470

- Suspended showcase with glass top and bottom
- 48" x 16" x 60"
- Sliding or hinged glass doors
- Fully adjustable shelving
- Thru glass lock
- Adjustable height of poles
- Mount showcases at any height on poles

SL21-S

FROM \$1,635

- Suspended showcase with glass top and storage
- 48" x 16" x 60"
- Sliding or hinged glass doors
- Fully adjustable shelving
- Thru glass lock
- Adjustable height of poles
- Mount showcases at any height on poles
- Various lighting options



Toll Free: (877) 923-3848

FOLLOW US

LIVE
CHAT

SL22K**FROM \$1,675**

- Suspended showcase with lights in top and kick
- 48" x 16" x 60"
- Sliding or hinged glass doors • Fully adjustable shelving
- Thru glass lock
- Adjustable height of poles
- Mount showcases at any height on poles
- Various lighting options

**SM11-K****FROM \$1,330****SL24****FROM \$1,810**

- Suspended showcase with glass top/bottom and split shelving
- 73" x 16" x 60"
- Sliding glass doors
- Fully adjustable shelving
- Thru glass lock
- Adjustable height of poles
- Mount showcases at any height on poles

- Suspended showcase with glass top and kick base
- 16" x 16" x 60"
- Tempered glass hinged door
- Glass lock with handle
- Adjustable height of pole
- Mount showcases at any height on pole
- Various lighting options

SL26-K

FROM \$2,130



- Suspended showcase with backlit header, split shelving and kick
- 73" x 16" x 80"
- Sliding glass doors
- Fully adjustable shelving
- Thru glass lock
- Adjustable height of poles
- Mount showcases at any height on poles
- Various lighting options



SM10

FROM \$790

- Suspended showcase with glass top/bottom
- 16" x 16" x 16"
- Tempered glass hinged door
- Glass lock with handle
- Adjustable height of pole
- Mount showcases at any height on pole

SM12

FROM \$1,450

- Suspended showcase with lights in top
- 16" x 16" x 60"
- Tempered glass hinged door
- Glass lock with handle
- Adjustable height of pole
- Mount showcases at any height on pole
- Various lighting options



Toll Free: (877) 923-3848

FOLLOW US

LIVE
CHAT

SM13-S**FROM \$**

- Suspended showcase with lights in top, backlit header top and storage
- 16" x 16" x 70"
- Tempered glass hinged door
- Glass lock with handle
- Adjustable height of pole
- Mount showcases at any height on pole
- Various lighting options

**SM15****FROM \$1,510****SM14****FROM \$1,330**

- Triangular suspended showcase with glass top/ bottom
- 16" x 16" x 60"
- Tempered glass hinged door
- Glass lock with handle
- Adjustable height of pole
- Mount showcases at any height on pole.

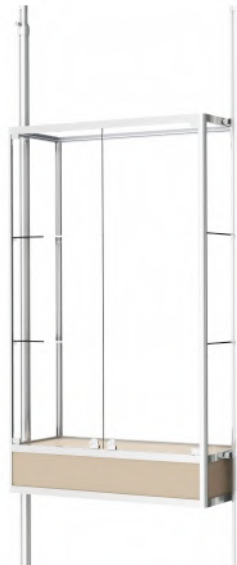
- Triangular suspended showcase with lights in top
- 16" x 16" x 60"
- Tempered glass hinged door • Glass lock with handle
- Adjustable height of pole
- Mount showcases at any height on pole
- Various lighting options

SM20-K**FROM \$1,260**

- Suspended showcase with glass top and kick base
- 36" x 16" x 24"
- Sliding glass doors
- Thru glass lock
- Adjustable height of pole
- Mount showcases at any height on pole
- Various lighting options

**SM20-S****FROM \$1,385**

- Suspended showcase with glass top and storage
- 36" x 16" x 32"
- Sliding glass doors
- Thru glass lock
- Adjustable height of pole • Mount showcases at any height on pole
- Various lighting options

**SM21-K****FROM \$1,520**

- Suspended showcase with glass top and kick base
- 36" x 16" x 60"
- Sliding or hinged glass doors
- Glass locks with handle
- Adjustable height of pole
- Mount showcases at any height on pole
- Various lighting options

Toll Free: (877) 923-3848**FOLLOW US****LIVE
CHAT**

SM200-S**FROM \$860**

- Suspended storage unit
- 36" x 16" x 16"
- Sliding doors
- Thru glass lock
- Adjustable height of pole
- Mount showcases at any height on pole

**SM210-S****FROM \$1,005****SM23-S****FROM \$1,615**

- Suspended showcase with backlit header and storage
- 36" x 16" x 60"
- Sliding or hinged glass doors • Glass locks with handle
- Adjustable height of pole
- Mount showcases at any height on pole
- Various lighting options
- (Optional closed back shown)

- Suspended storage unit
- 36" x 16" x 32"
- Sliding doors
- Thru glass lock
- Adjustable height of pole
- Mount showcases at any height on pole

BOUTIQUE
SHOWCASES

BO-E**FROM \$759**

- Boutique showcase with glass top and lights
- 18" x 18" x 24"
- Sliding or hinged glass doors
- Thru glass lock
- Leveller feet
- Various lighting options

**B1****FROM \$1,360****BO-2****FROM \$836**

- Boutique showcase with glass top
- 24" x 18" x 24"
- Sliding or hinged glass doors
- Thru glass locks
- Leveller feet

**BO-T****FROM \$810**

- Triangular boutique showcase with glass top
- 18" x 18" x 24"
- Sliding or hinged glass doors
- Thru glass lock
- Leveller feet



- Centre split boutique showcase with glass top and H-frame
- 18" x 18" x 42"
- Tempered hinged glass doors
- Glass locks with handle
- Leveller feet

B1-3E**FROM \$1,385**

- 3-foot long boutique showcase with glass top, lights and H-frame
- 36" x 18" x 42"
- Sliding glass doors
- Thru glass lock
- Leveller feet
- Various lighting options

B2-2E**FROM \$1,410**

- 2-foot long boutique showcase with glass top, lights and H-frame
- 24" x 24" x 72"
- Tempered hinged glass door • Fully adjustable shelving
- Glass lock with handle
- Leveller feet
- Various lighting options

B3-2**FROM \$1,515**

- 2-foot long boutique showcase with lights in top and H-frame
- 24" x 24" x 72"
- Tempered hinged glass door
- Fully adjustable shelving
- Glass lock with handle
- Leveller feet
- Various lighting options

B4-E**FROM \$1,490**

- Boutique showcase 45-degree glass top, lights and H-frame
- 18" x 18" x 72"
- Tempered hinged glass door • Fully adjustable shelving
- Glass lock with handle
- Leveller feet
- Various lighting options

Toll Free: (877) 923-3848**FOLLOW US****LIVE
CHAT**

WALL-MOUNTED
SHOWCASES

WO-2

FROM \$890



- Wall mounted showcase with glass top, bottom and sides
- 24" x 12" x 48"
- Sliding or hinged glass doors
- Fully adjustable shelving
- Thru glass lock

W1-3

FROM \$1,040



- Wall mounted showcase with small header top and glass sides
- 36" x 12" x 48"
- Sliding glass doors
- Fully adjustable shelving
- Thru glass lock
- Various lighting options

W1-4B

FROM \$1,140



- Wall mounted showcase with small header top, glass sides and a base
- 48" x 12" x 48"
- Sliding glass doors
- Fully adjustable shelving
- Thru glass lock
- Various lighting options

Toll Free: (877) 923-3848

FOLLOW US


**LIVE
CHAT**


W2-2

FROM \$1,270



- Wall mounted showcase with backlit header top and glass sides
- 24" x 12" x 48"
- Sliding glass doors
- Fully adjustable shelving
- Thru glass lock
- Various lighting options

W3-6B

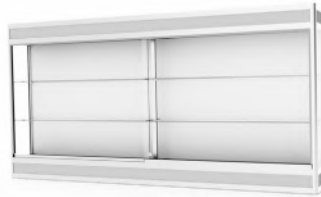
FROM \$1,710



- Wall mounted showcase with lights in top, split shelving and glass sides.
- 72" x 12" x 48"
- Sliding glass doors
- Fully adjustable shelving
- Thru glass lock
- Various lighting options

W48B

FROM \$1,820



- Wall mounted showcase with small header top, glass sides, split shelving and a base
- 96" x 12" x 48"
- Sliding glass doors
- Fully adjustable shelving
- Thru glass lock
- Various lighting options

W7-8B

FROM \$2,020



- Wall mounted showcase with small header top, glass sides, split shelving, re-enforcement in the middle and a base
- 96" x 12" x 48"
- Sliding glass doors
- Fully adjustable shelving
- Thru glass lock
- Various lighting options

CUSTUM-B

FROM \$4,310



- Wall mounted showcase with small header top, glass sides, split shelving, multiple re-enforcements and a base
- 192" x 12" x 60" (Maximum length for custom configuration for wall mounted showcases)
- Sliding glass doors
- Fully adjustable shelving
- Thru glass lock
- Various lighting options

Toll Free: (877) 923-3848

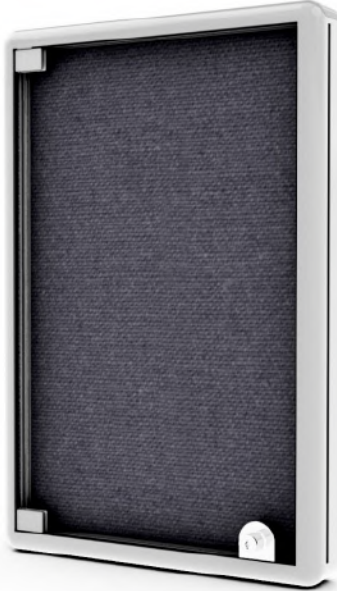
FOLLOW US



LIVE
CHAT



INFO
CABINETS

i-Mini**FROM \$690**

- Wall mounted info cabinet with glass top, bottom and sides
- 16" x 3" x 24"
- Sliding glass doors
- Thru glass lock
- Various options for tack board surfaces

iO-2**FROM \$860**

- Wall mounted info cabinet with glass top, bottom and sides
- 24" x 5" x 48"
- Sliding glass doors
- Thru glass lock
- Various options for tack board surfaces

iO-3**FROM \$920**

- Wall mounted info cabinet with glass top, bottom and sides
- 36" x 5" x 48"
- Sliding glass doors
- Thru glass lock
- Various options for tack board surfaces

iO-3B**FROM \$970**

- Wall mounted info cabinet with glass top, sides and a base
- 36" x 5" x 48"
- Sliding glass doors
- Thru glass lock
- Various lighting options
- Various options for tack board surfaces

Toll Free: (877) 923-3848**FOLLOW US****LIVE
CHAT**

iO-4B

FROM \$1,055



- Wall mounted info cabinet with glass top and a base
- 48" x 5" x 48"
- Sliding glass doors
- Thru glass lock
- Various lighting options
- Various options for tack board surfaces

iO-8B

FROM \$1,480



- Wall mounted info cabinet with a base
- 97" x 8" x 48"
- Sliding glass doors
- Thru glass lock
- Various lighting options
- Various options for tack board surfaces

i1-2

FROM \$865



- Wall mounted info cabinet with small header, glass sides and bottom
- 24" x 5" x 48"
- Sliding glass doors
- Thru glass lock
- Various lighting options
- Various options for tack board surfaces

i1-3

FROM \$940



- Wall mounted info cabinet with small header, glass sides and bottom
- 36" x 5" x 48"
- Sliding glass doors
- Thru glass lock
- Various lighting options
- Various options for tack board surfaces

i1-4B

FROM \$1,040



- Wall mounted info cabinet with small header, glass sides and base
- 48" x 5" x 48"
- Sliding glass doors
- Thru glass lock
- Various lighting options
- Various options for tack board surfaces

i2-3

FROM \$1,305



i1-8B

FROM \$1,600



- Wall mounted info cabinet with small header, glass sides and base
- 48" x 5" x 48"
- Sliding glass doors
- Thru glass lock
- Various lighting options
- Various options for tack board surfaces

i2-2

FROM \$1,150



- Wall mounted info cabinet with backlit header, glass sides and bottom
- 24" x 5" x 56"
- Sliding glass doors
- Thru glass lock
- Various lighting options
- Various options for tack board surfaces

- Wall mounted info cabinet with backlit header, glass sides and bottom
- 36" x 5" x 56"
- Sliding glass doors
- Thru glass lock
- Various lighting options
- Various options for tack board surfaces

Toll Free: (877) 923-3848

FOLLOW US

LIVE
CHAT

i3-4B

FROM \$1,380



- Wall mounted info cabinet with backlit header
- 48" x 5" x 56"
- Sliding glass doors
- Thru glass lock
- Various lighting options
- Various options for tack board surfaces

PORTABLE & COUNTERTOP
SHOWCASES

PO

FROM \$580



- Countertop showcase with glass top
- 4" x 14" x 12"
- Sliding or hinged glass doors
- Thru glass lock

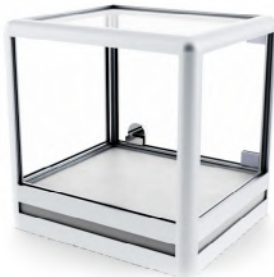
PO-H

FROM \$1,085



PO-E

FROM \$640



- Countertop showcase with glass top
- 14" x 14" x 33"
- Tempered glass hinged doors
- Thru glass lock
- Various lighting options

P2-E

FROM \$860



- Countertop showcase with glass top
- 48" x 20" x 32"
- Sliding glass doors
- Thru glass lock
- Various lighting options

- Portable showcase with glass top on detachable H-frame
- 14" x 14" x 38"
- Sliding or hinged glass doors
- Thru glass lock
- Leveller feet

P1-EH**FROM \$1,260**

- Portable showcase with glass top on detachable H-frame
- 4" x 14" x 59"
- Tempered glass hinged doors
- Thru glass lock
- Leveller feet
- Various lighting options

PO-S**FROM \$1,230**

Portable showcase with glass top on detachable frame with storage.

- 14" x 14" x 38"
- Sliding or hinged glass doors
- Thru glass lock
- Leveller feet
- Various lighting options

P1-S**FROM \$1,470**

• Portable showcase with glass top on detachable frame with storage.

- 14" x 14" x 59"
- Tempered glass hinged doors
- Thru glass lock
- Leveller feet
- Various lighting options

P2-ES**FROM \$1,440**

Portable showcase with glass top on detachable frame with storage.

- 49" x 21" x 38"
- Sliding glass doors
- Thru glass lock
- Leveller feet
- Various lighting options

Toll Free: (877) 923-3848**FOLLOW US****LIVE
CHAT**

P2-H

FROM \$1,410



- Portable showcase with
- glass top on detachable
- H-frame
- 49" x 21" x 38"
- Sliding glass doors
- Thru glass lock
- Leveller feet

P1-3ES

FROM \$1,720



- 3-foot long portable showcase
- with glass top on detachable
- frame with storage
- 37" x 14" x 59"
- Sliding or hinged glass doors
- Thru glass lock
- Leveller feet
- Various lighting options

SHAPES &
COMBINATIONS



All of our showcases can be built in different shapes and configurations so that with a variety of cases, you can design your own layouts. These layouts can be customized for various concepts such as: a store layout, an open kiosk concept for a new product (line), launch for a tradeshow, and many other retail and museum layouts. With shapes and combinations you can also create several configurations with the same cases, or get a completely different look when you use another shape with your Custom Exhibit Group. This is ideal for dynamic retail environments or when used for exhibitions.

The illustrations on the right are a representation of some of the shapes that can be used to create a specific layout. The blue lines represent the “shapes” and the grey can be any of the standard showcases you can find in this catalogue.

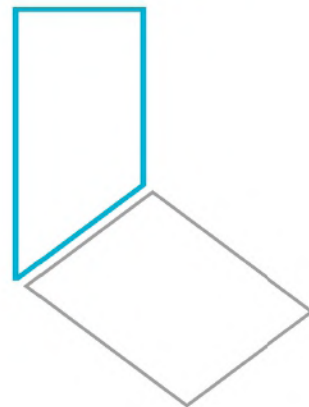
Note: The frame of the SC-Series is made out of large extrusion and the SMC-Series frames are constructed using the small extrusion.

For more information about shapes and combinations, please contact us directly.

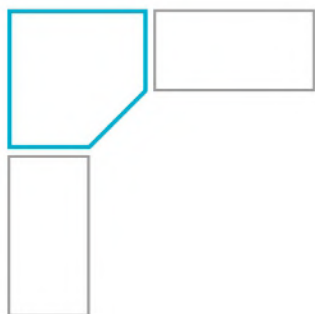
SCM1



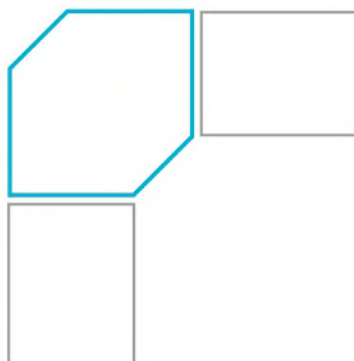
SCM2



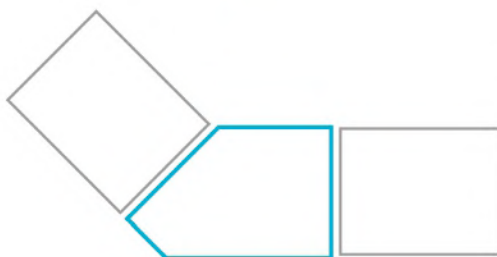
SC1



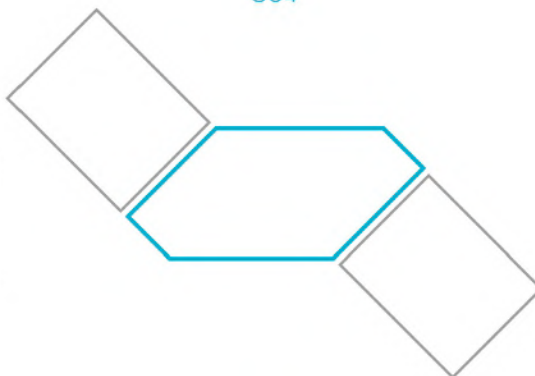
SC2



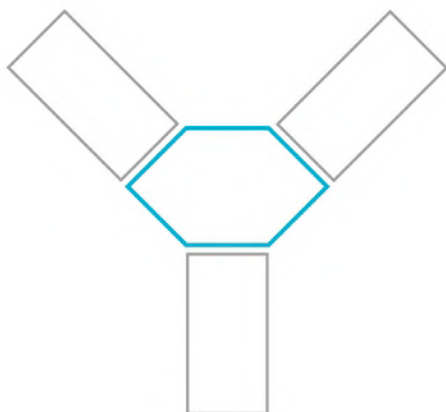
SC3



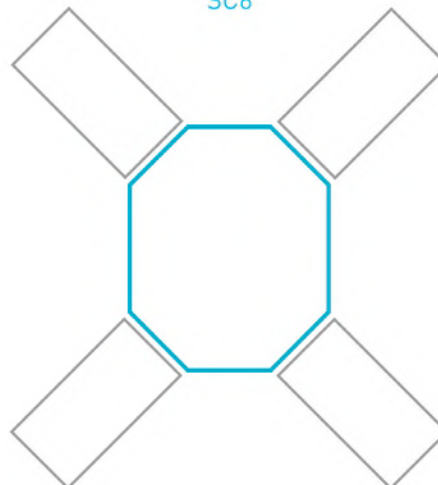
SC4



SC5



SC6



MATERIAL &
FINISHES

In order to make the top quality showcases, you need to use the best materials available today. We constantly source new materials, parts and finishes on a daily basis to keep up with the fast evolving industry. Once tested, these new innovations are added to everything else we offer. Next to our own research, we work together with suppliers that share our passion for quality and innovation.

Custom Exhibit Group is very flexible when it comes to project with certain requirements. Tell us if you already have materials that you would like to work with. Chances are, we already know it, and if we don't, we do like a challenge!

Toll Free: (877) 923-3848

FOLLOW US



**LIVE
CHAT**



Aluminum

All of our extrusions are made of a high quality tempered aluminum alloy called 6063-T5. Aluminum properties:

- Naturally resists corrosion, even more with anodic coating
- Readily available and cheaper than steel
- Best strength-to-weight ratio of any metal
- Wide range of finishes available
- 100% recyclable

Custom Aluminium Options:

Among the available finishes are: powder coatings (any colour) and anodized with optional textures.

Glass

Glass will allow your displayed items to be viewed while restricting access to them. It will also give the display a more exclusive appearance, combined with excellent lighting that will create a sparkling effect. This will attract more customers to your display.

Custom glass options:

- Glass shelves may be as thick as 25mm
- For display glass inserts (sides, tops, backs, etc.) we use clear float glass with flat polished edges. All glass inserts are available tempered for safety
- Coloured glass is available in all thicknesses as well. Colour matched and various finishes are available (opaque, translucent, metallic, pearl)
- Low-iron Star-fire glass is available in thicknesses up to 19mm.

- This glass greatly reduces the green tint seen in normal float glass

- Other glass products are available such as mirror, laminated and patterned glass.

Substrates

Our extrusion system allows us to use any substrate available on the market. Therefore, we are able to work with any supplier of melamine and laminate. This gives us freedom to create exactly the custom design you are looking for. We can offer any of the following types of substrates:

- Particle board/melamine
- MDF (Medium Density Fibreboard)
- Plywood
- Acrylics/plastics
- Engineered materials (honey-combed plastics or aluminium)
- Solid wood
- Glass & mirror
- MDO (Medium Density Overlay)
- Many more substrates to choose from

Custom Substrate Options:

Choose any of the thousands of finishes available on the market.

Plastics

We use plastics for several purposes in your system. The types of plastics we offer are vinyl and acrylics. They are used for of glass battens, door channels and other components. We also use plastics for signage, back-lighting, and display case panels. We work with several suppliers who can supply us with any custom solutions such as display item stands, and other product specific requirements.

Custom Plastic Options:

Choose any of the thousands of finishes and colours available on the market.

Fabrics

We use high quality fabrics in our cases for several purposes such as: finish options for corkboard panels, jewellery beds etc. Some fabrics such as Pacific Silver Cloth aid in the preservation of valuables.

Custom Fabric Options:

For other applications please consult our designers.

Graphics

There is nothing more important for your branding strategy than good exposure to your customers. Therefore we have all the resources necessary to incorporate your branding into the custom design. We can print all the graphics ourselves or, if desired, you can send us your graphics and we will apply it to the product.

Custom Graphic Options:

We can print any of your graphics in vinyl colours, full colour Dura-trans and apply it on backlit signage, flip-frames for easy changing graphics, and of course on the glass and substrates.

LIGHTING
SOLUTIONS



At Custom Exhibit Group we spend more of our research and development time on lighting. This is partly because of the importance of lighting in quality displays but also because the lighting industry is rapidly advancing. Many lighting technologies have come and gone, and we have worked with all of them, including technologies such as fiber optic and holographic. Sometimes it is important to think outside of the box when it comes to lighting, especially in museum and other exclusive applications. Most lighting solutions answer three needs; colour of light, intensity, and coverage. Further concerns include longevity, availability, temperature, energy consumption, and ease of use. The reality is that cheap is almost always bad in lighting. Rest assured however, there are options. In this chapter we will describe some of the advantages and disadvantages of the two most commonly used light types; fluorescent and light emitting diodes (LED).

How to use lighting in your showcase depends on what you need to display. You can light from the top down, bottom up, or from the sides. You can also use a combination, which gives a better result. The extrusion profiles of our cases allows us to hide the wiring for a cleaner appearance. Light bars can be made in any length, and we can help figure out how much or little light you need. We are confident that we have the best lighting solutions available.

LED Light Fixtures

LED technology has been advancing at a staggering rate and is now of equal, or even in some cases higher performance than conventional lighting. Because of the great leap in technology, we now have selected LED as our standard lighting solution.

LED advantages:

- Life span between 50,000 to 100,000 hours
- Durable, they have no filament and are shock resistant
- Extremely energy efficient, 80% of energy is converted to lighting
- Very little heat output
- No UV radiation
- Very high watt to lumen ratio

Disadvantages:

- Higher initial cost compared to existing conventional technologies
- Lower light output

Fluorescent Light Fixtures

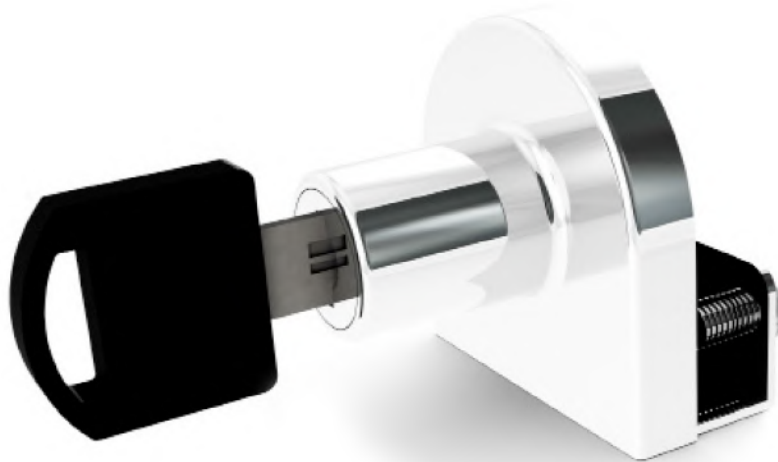
Fluorescent advantages:

- Up to 66% cheaper than incandescent lighting while providing the same amount of light
- Lasts six times longer than incandescent
- Little heat output

Fluorescent Disadvantages:

- Higher initial cost
- Light tube may flicker near the end of it's life
- Mercury content

LOCKS &
SECURITY



If it were not for the need of security, there would be no glass cabinets. Therefore, locks are standard in all Custom Exhibit Group. Regular locking mechanisms need to be easy to use, easy to maintain, and need to make the case relatively tamper resistant. Keeping out professional thieves requires more complicated and expensive measures, and these are typically used in museum applications. Some high security features may include: locks with a unique key number registered to the client, security film applied to the glass interior (to prevent smash and grabs), and electronic monitoring.

Standard locks are used in all displays unless specified otherwise. To satisfy special security concerns or specifications, we may also provide locks from any manufacturer, including Kenstan and Abloy. Please contact our design team to discuss all your concerns regarding security.

Depending on the manufacturer, different options may be available:

- Various finishes and colours
- Key control (registered key numbers, specific to store or department)
- Controlled duplication of key numbers
- Key retaining vs. non-key retaining (key retaining locks prevent the key from being removed unless the lock is engaged)
- Resistance to attack (increased resistance to drilling and picking)
- Electronic key systems for monitoring display case access

CONTACT



LOCATION 1

10410 Medical Loop
Laredo, Tx - 780454

LOCATION 2

2 Jane St
York, Ontario - M6S 4W8
Canada

LOCATION 3

8939 S Sepulveda Blvd
Los Angeles, CA - 90045

LOCATION 4

9601 N Main St
Jacksonville, FL - 32218

LOCATION 5

1720 Spillman Dr
Bethlehem, PA - 18015

LOCATION 6

433 W Van Buren St
Chicago, IL - 60607

LOCATION 7

309 S Cloverdale St
Seattle, WA - 98108

Toll Free: (877) 923-3848

FOLLOW US



**LIVE
CHAT**



A BETTER WAY TO DISPLAY®

CUSTOM EXHIBIT GROUP®



GLASS SHOWCASES / CLASSIC LINE

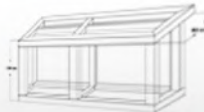


Satisfaction
guaranteed



*Some restrictions apply

on time
always



custom
designs

Live Chat
our team

CHAT NOW

